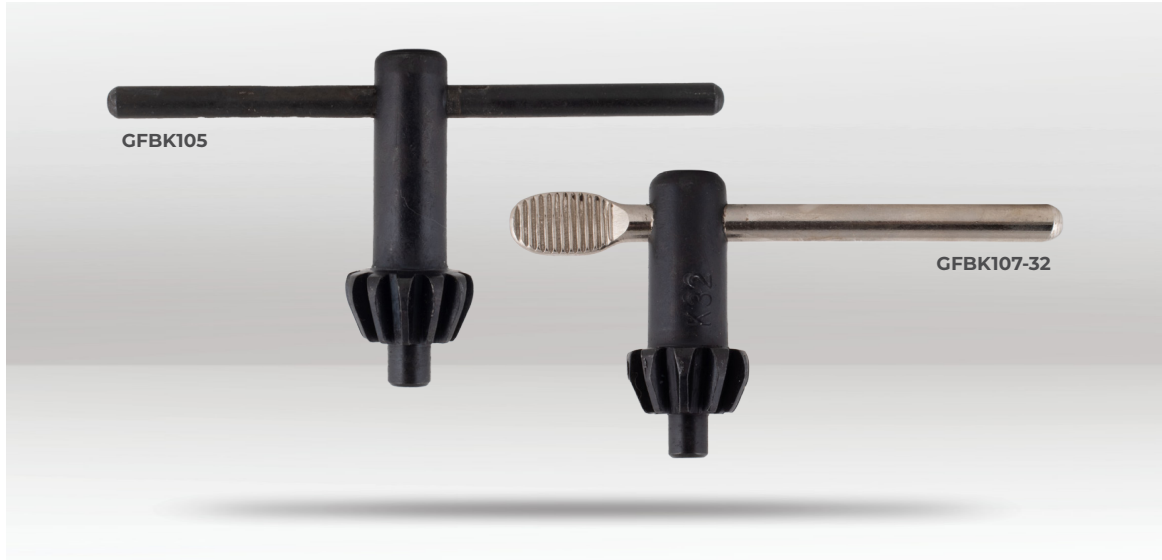


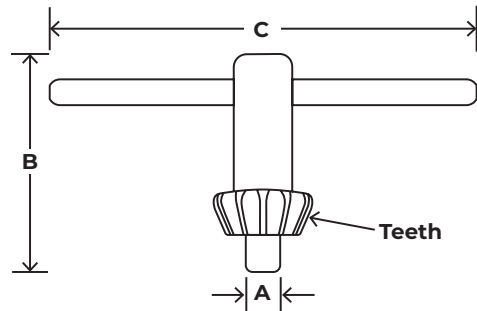
## PRODUCT INFO

# CHUCK KEYS



### DESCRIPTION

GFB Chuck Keys are crafted from high-quality steel, ensuring durability for rigorous industrial applications. Precision-engineered for reliability, they excel in tightening and loosening chuck jaws. These keys promise longevity and performance, making them essential tools for heavy-duty use.



CODE	BARCODE	SUITS (BRAND)	SUITS (CHUCK SIZE)	PIN DIAMETER (A)	KEY LENGTH (B)	HANDLE LENGTH (C)	TEETH
GFBK101-10	9313234001011	Jacobs Series MC2, MC6 & KG Rohm S14	6mm - 10mm (1/4" - 3/8")	6mm (1/4")	35mm	60mm	11
GFBK102-36	9313234001028	Makita & HP1030	6mm - 10mm (1/4" - 3/8")	6mm (1/4")	50mm	75mm	12
GFBK103-2	9313234001035	Jacobs Series K2	10mm - 13mm (3/8" - 1/2")	6mm (1/4")	50mm	90mm	12
GFBK104-11	9313234001042	Jacobs Series MC4, KK	13mm (1/2")	6mm (1/4")	40mm	75mm	10
GFBK105	9313234001059	Standard Generic	13mm (1/2")	8mm (5/16")	60mm	110mm	12
GFBK107-32	9313234001073	Jacobs Series K32, K33	13mm (1/2")	6mm (1/4")	45mm	85mm	10
GFBK114	9313234001141	Bosch G3M-16RE, AEG B2E16RLD & AEG SB2-35D	16mm (5/8")	8mm (5/16")	50mm	100mm	12
GFBK116-34	9313234001165	Jacobs S2, Metabo35 &167, Rohm S2	13mm (1/2")	6mm (1/4")	40mm	75mm	12