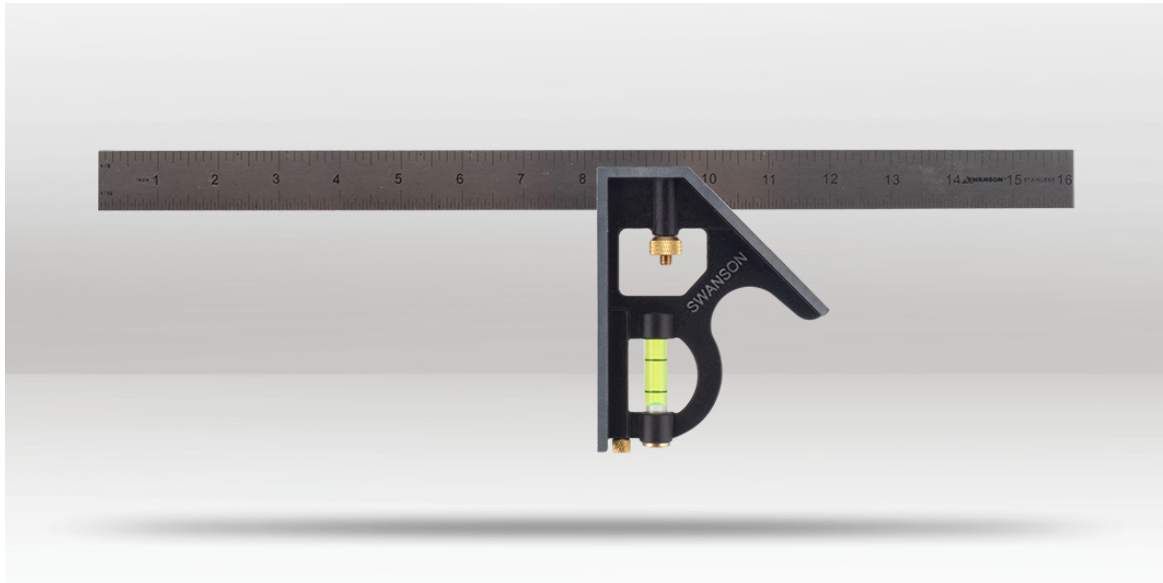


PRODUCT INFO

PRO COMBINATION SQUARE

SWTC134



DESCRIPTION

Introducing our exceptional 400mm/16" combination square, perfectly suited for those substantial projects. Crafted with impact-resistant acrylic level vial, this tool guarantees enduring durability. Acting as a depth gauge, it provides unmatched versatility alongside CNC machined working surfaces, ensuring impeccable precision. Built with stainless steel and brass hardware, this companion is built to last a lifetime. Its precision machined die-cast zinc head adds to its reliability, while the spring-loaded, brass bolt guarantees firm and accurate settings. The stainless steel blades showcase black precision etchings and come complete with brass hardware. With the inclusion of a screw fit brass scriber and an impact-resistant acrylic level vial, this combination square offers a wide range of measurement options, including 1/8", 1/16", 1/32", and mm scale graduations.

FEATURES

- Precision machined die-cast zinc head.
- Spring loaded, brass bolt assures firm, accurate settings.
- Stainless steel blades with black precision etchings, includes brass hardware.
- Screw fit brass scriber & impact resistant acrylic level vial.
- 1/8", 1/16", 1/32", and mm scale graduations.

BARCODE: 038987001345

LENGTH: 406mm (16")

WIDTH: 126mm

DEPTH: 19mm

BLADE WIDTH: 25mm

BLADE THICKNESS: 2mm

BLADE MATERIAL: Stainless Steel

BODY MATERIAL: Die-cast zinc

GRADUATIONS: 1/8", 1/16", 1/32", mm

WEIGHT: 382g