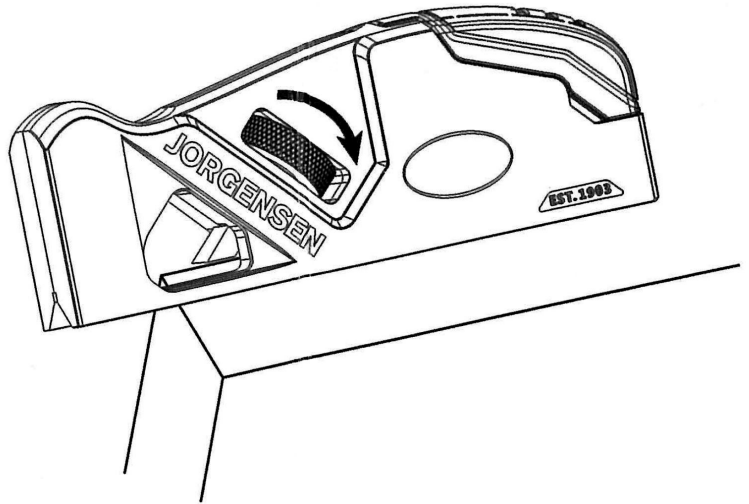


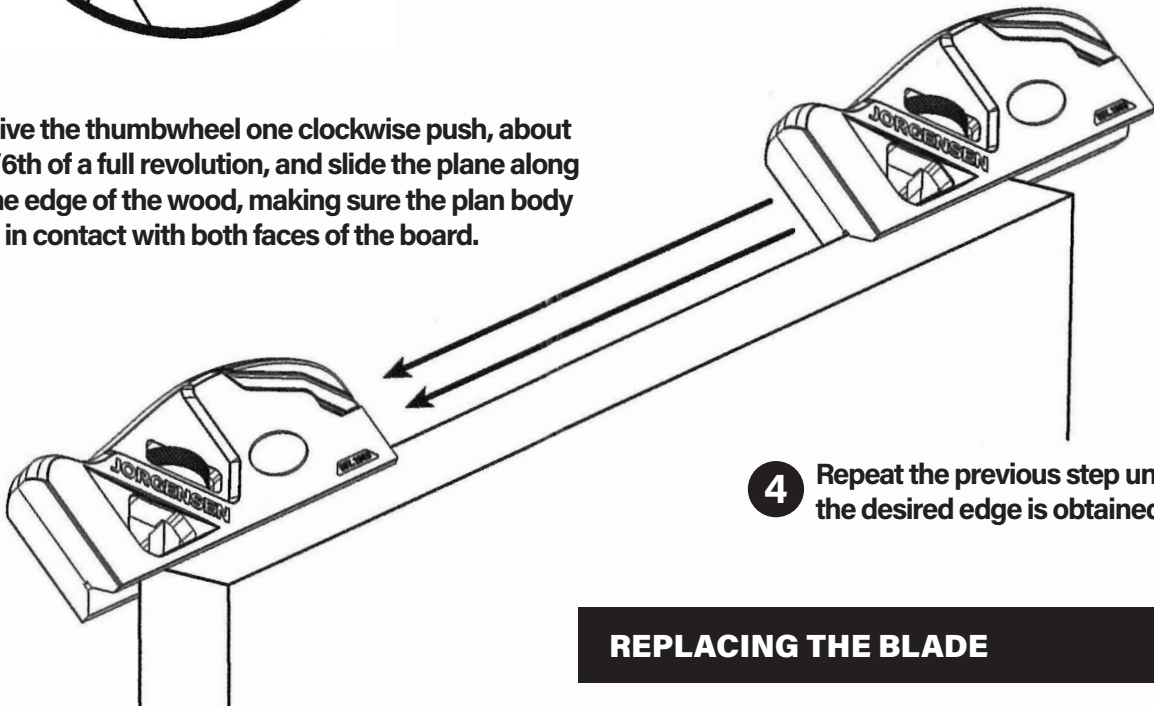
INSTRUCTIONS

- 1 Retract the blade by turning the thumbwheel counter clockwise, then locate the plane on the corner of a board.



- 2 Advance the blade by turning the thumbwheel clockwise (when viewed from the top) until the blade is in contact with the wood.

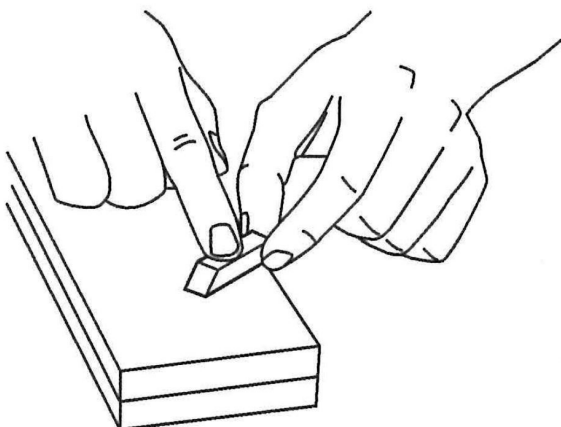
- 3 Give the thumbwheel one clockwise push, about 1/6th of a full revolution, and slide the plane along the edge of the wood, making sure the plan body is in contact with both faces of the board.



- 4 Repeat the previous step until the desired edge is obtained.

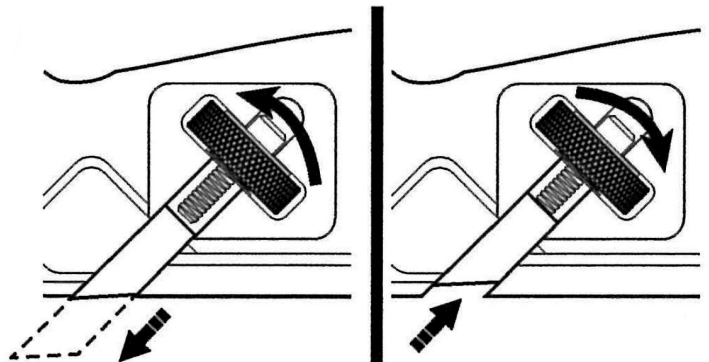
RESHARPENING THE BLADE

Honing the flat face of the blade on a bench stone.



REPLACING THE BLADE

- 1 Advance the blade by turning the thumbwheel clockwise until the blade is off the plane.



- 2 Insert a new blade into the cutter groove, install the new blade by turning the thumbwheel counter-clockwise.