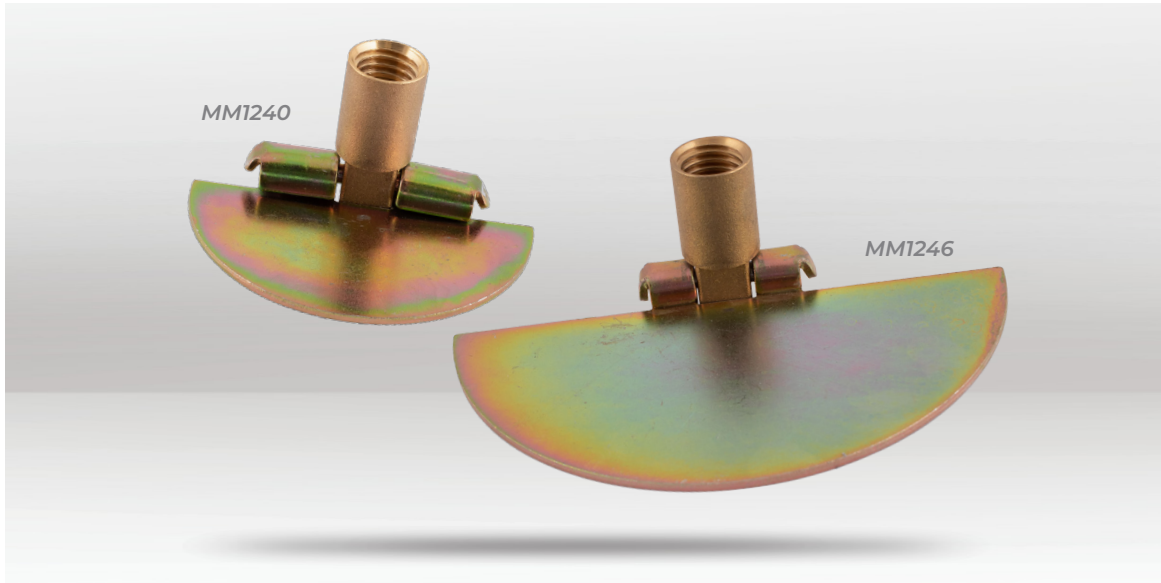




PRODUCT INFO

DROP SCRAPERS

MM1240 & MM1246



DESCRIPTION

The Bailey Drop Scrapers are designed to remove obstructions within drains pipes. The scraper glides over small debris, such as silt and stones, then drops into a vertical scraping position to allow the offending material to be dragged back toward the operator. These drop scrapers are made from solid brass to ensure strength and durability during use. Has also been fitted with a Lockfast joint which offers more security to the connection of the drain rod as the joint is secured with a locking nut. The connection can't come undone whichever way the rods are turned. For use with Bailey Blue Rods®. These Bailey Plungers are available in 2 available sizes: 100mm (MM1240) and 150mm (MM1246).

USE WITH

Bailey Blue Rods® (*MM1219, MM1222, MM1819, MM1922*)



MM1240

BARCODE: 5016729022891
DIAMETER: 100mm (4")
BLADE: 50 x 95mm
MATERIAL: Brass
WEIGHT: 176g

MM1246

BARCODE: 5016729022914
DIAMETER: 150mm (6")
BLADE: 75 x 150mm
MATERIAL: Brass
WEIGHT: 305g