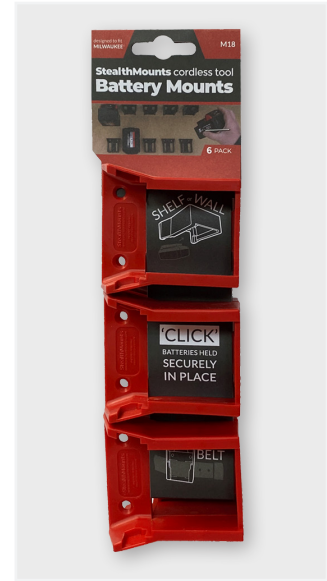
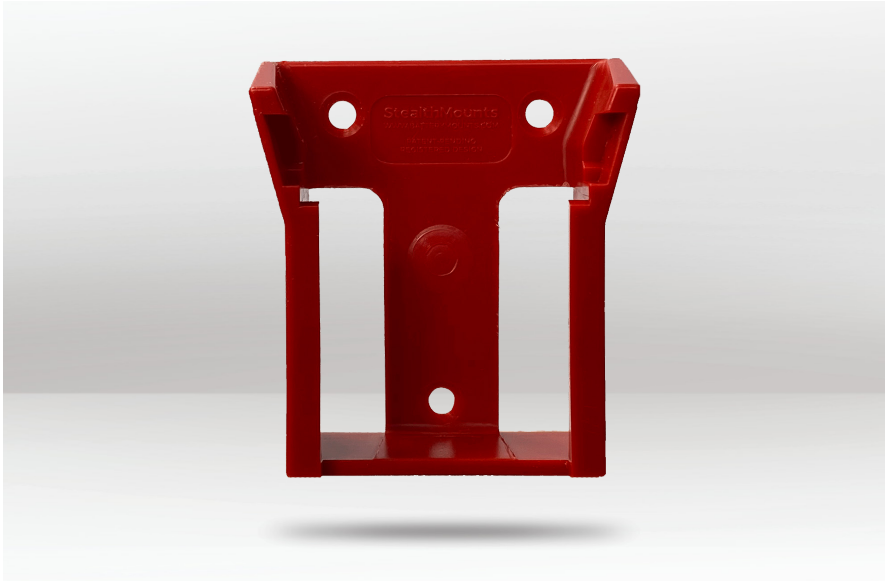


PRODUCT INFO

BATTERY MOUNT FOR MILWAUKEE M18 BM-BMMW18RED6



DESCRIPTION

StealthMounts Battery Mounts for Milwaukee M18 cordless batteries keep your batteries organised and exactly where you need them. Batteries fit by clicking into the holder and are only released by pressing the release button on the battery. Batteries can be held at any angle locked in the holder and will not fall out even whilst travelling. Perfect for mobile setups or workshops! Manufactured in the United Kingdom our Milwaukee M18 Battery Mounts are made using extremely durable injection moulded ABS plastic with countersunk screw holes to allow for firm mounting on multiple surfaces. Great for keeping track of your batteries and staying organised. They can be mounted at any distance from one another and in tight spaces for maximum workshop efficiency. Mount them in your workshop, under shelves, toolboxes, tool trailers or in your work vehicles with due care. They can also be looped through a belt for use on the job site. StealthMounts Battery Mounts are available colour coded to match your Milwaukee platform.

COMPATIBLE WITH

Milwaukee M18 Batteries



BARCODE: 650327936584

LENGTH: 70mm

WIDTH: 64mm

DEPTH: 25mm

COLOUR: Red

QUANTITY: 6 pack

PACKAGING: 255 x 75 x 55mm