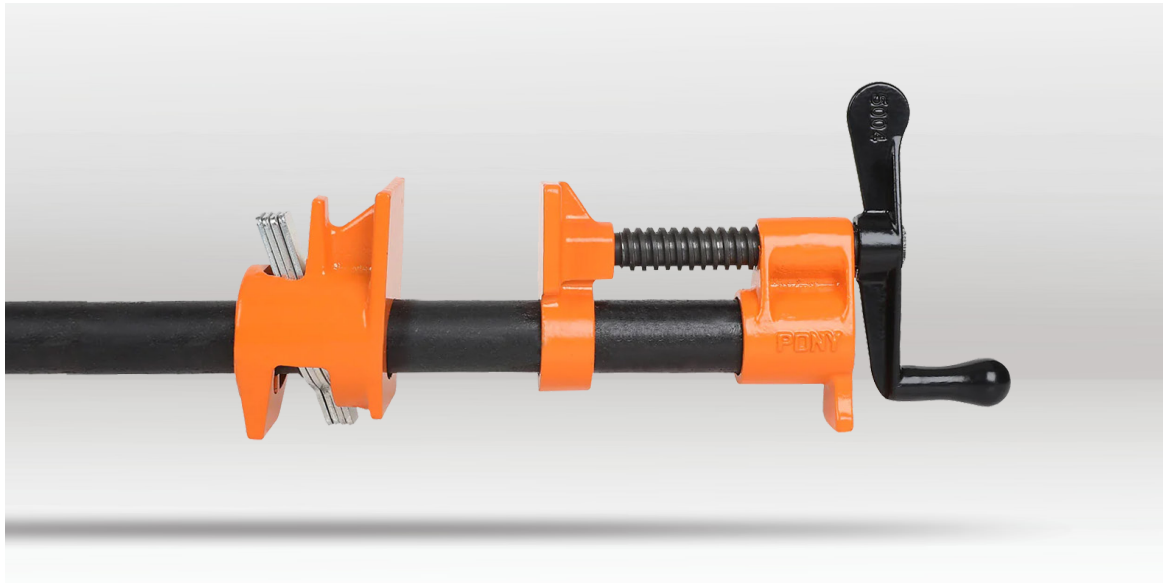


PRODUCT INFO

PIPE CLAMP FIXTURE FOR 3/4" PIPES

AJP50



*PIPE NOT INCLUDED

DESCRIPTION

The iconic Pony 3/4-inch pipe clamp has become America's most popular and widely used pipe clamp fixture design. Its original steel multiple-disc-clutch configuration guarantees a steadfast grip and immediate adjustment at any position along the pipe, eliminating concerns of slippage or pipe damage. This versatile fixture accommodates any length of 3/4" - 14 NPT pipe, provided that the pipe exceeds the workpiece by at least seven inches. Meticulously crafted from robust and enduring iron casting, it ensures longevity and durability. With a clamping face measuring 1 3/4 inches, this fixture empowers craftsmen with steadfast and efficient workholding capabilities.

FEATURES

- Works with 3/4 inch black or galvanized threaded pipe.
- Pipe is not included.
- Coil spring stop prevents tail piece from sliding off.
- Made of durable cast iron.
- Multi-disc clutch design allows a secure hold and instant adjustment.
- Works with any length pipe, as long as it is 7" longer than workpiece.

BARCODE: 044295050005

PIPE USED: 3/4" - 14 NPT Pipe

HANDLE: Crank

CLAMPING FACE: 1 3/4" square

MAX. OUTER DIAMETER: 1.05" (26.67mm)

WEIGHT: 830g